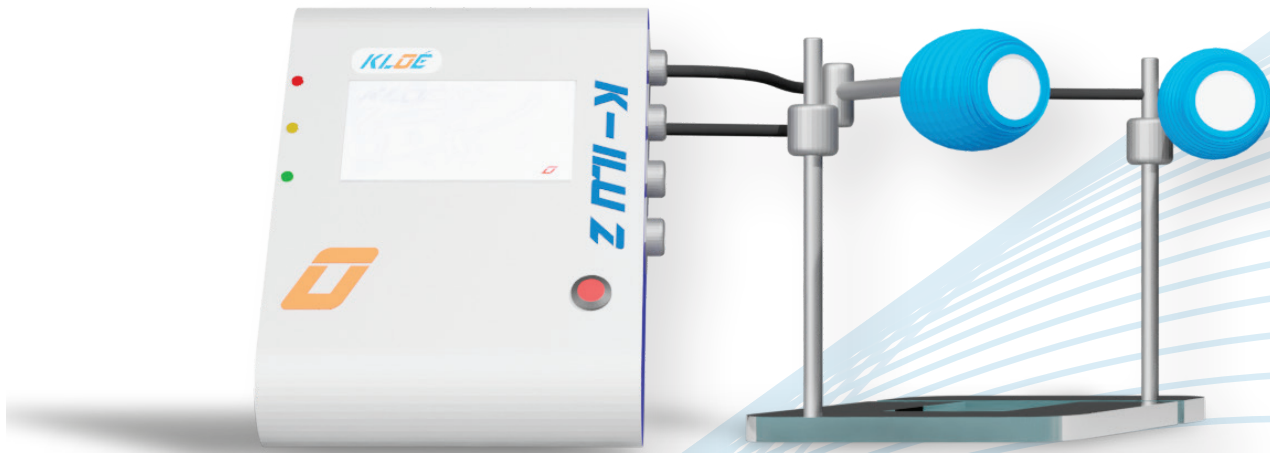


UV-LED Source equipment

K-ILU Z

UV-LED Spot Curing System



**“From 1 to 4 UV spots,
collimated or focused”**

Exposure area diameter: Focused 12mm - Collimated 20mm

365nm UV-LED source, +/- 5nm

Collimated or focused beam features

Continuous or flashing mode

**Compatible with all UV photoresists
sensitive to 365nm**

Benefits

***Touchscreen controlled
Continuous or flashing programmable
curing modes
Ideal on small surfaces***

KLOÉ

Punctual UV-LED exposure system, **K-ILLU Z** is perfectly adapted for bonding applications such as **optical fiber pigtailing** and **chip cards**.

A compact & user-friendly equipment

Can be used outside of a cleanroom

Ergonomic and fully controlled by touchscreen

From 1 to 4 curing heads, controlled **simultaneously** or **independently**

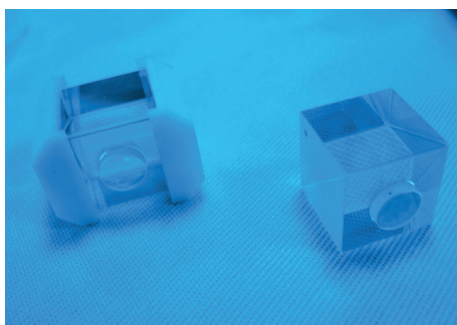
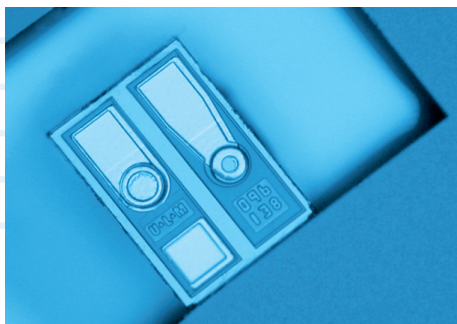
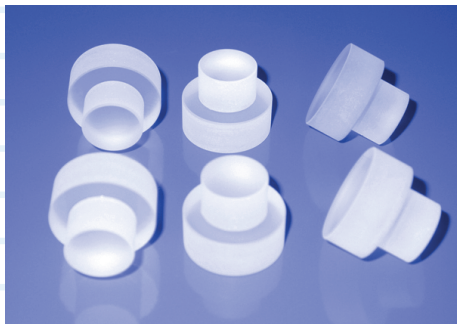
Led technology

Perfectly **monochromatic** exposure light source.

A **cold UV source**, prevents undesirable thermal effects.

Possibility to operate in **continuous or flashing mode**

Long lifetime: the uv-led light source is no longer considered as a consumable item.



PERFORMANCES

Beams feature (on request)	Collimated or focused
Number of programmable cycles	8
Maximum divergence angle	4° +/- 1°
Maximum exposure time	Continuous mode: 10min - Flashing mode: 40min/h



EXPOSURE AREA/WRITING SURF.

Working distance	Collimated: 100mm - Focused: 40mm
Exposure area diameter	Collimated: 20mm - Focused: 12mm
Substrate warm-up during exp.	< 2°C
Compatible photoresists	Compatible with all UV photoresists sensitive to 365nm

UV-LED SOURCE

Available wavelengths	365nm +/- 5nm
Exposure homogeneity	+/- 5%
Number of curing spots	From 1 to 4
LEDs Lifetime	> 10 000 hours
UV intensity modulation	20 to 100%

USAGE FEATURES

Colour touchscreen	5,7" diagonal
Power density (RMS)	Collimated: 35mW/cm² +/- 5% - Focused: 100mW/cm² +/- 5%
Exposure modes	Continuous or Flashing
Cleanroom type environment	Not required

GENERAL SPECIFICATIONS

Power supply	100-110V / 220-240V - 50Hz
Operating temperature	From 15° to 30°C - Stability +/- 1°C-

